

THE MONUMENT RESTORATION PROJECT

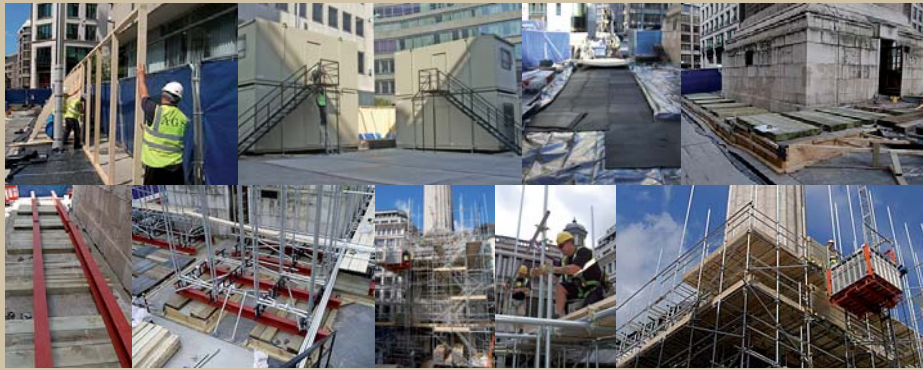
NEWSLETTER 1

The £4.5 million project, funded by the City of London Corporation, will involve the cleaning and repair of the Monument's stonework and the re-gilding of its famous golden orb. A range of new and improved facilities will be created such as a modified gallery "cage", new lighting and, for people who do not want to climb the 311 stairs to the top, there are plans for live views to be relayed from the gallery to visitors on the ground. The new facilities will also enable the Monument to host spectacular firework and laser displays.

Repairs to The Monument have been carried out approximately every hundred years, with work last undertaken in 1888. The Monument is scheduled to re-open to visitors when the 18-month programme of restoration work is completed in December 2008.

The restoration work will be carried out by Cathedral Works Organisation (Chichester) Ltd, which successfully completed the relocation of Temple Bar in 2004 for the City of London Corporation. The consultant architect engaged by the City for the project is Julian Harrap Architects.

The restoration is being filmed and photographed by Harris Digital Productions, who have also set up a website to show work in progress and updated information about the project.



- ❖ Built between 1671 and 1677 to commemorate the Great Fire of London and to celebrate the rebuilding of the City and is the tallest free-standing stone column in the world.
- ❖ It is 61 metres high (202 feet) - the exact distance between it and the site in Pudding Lane to the East where the fire began.
- ❖ One of the first heavy high-explosive bombs to fall on the City during WWII landed in King William Street, almost exactly the same distance to the West on 9th September 1940.
- ❖ Designed by Sir Christopher Wren and Dr Robert Hooke, Surveyor to the City of London and chief assistant of Christopher Wren
- ❖ Due to the difficulty of getting a sufficient quantity of Portland stone of the required dimensions the king issued a proclamation, dated 4th May 1669, forbidding any person to transport stone from the Isle of Portland without leave from Dr. Christopher Wren, the Surveyor-General.
- ❖ The total cost of the construction of the Monument is given as £13,450 11s. 9d.

PROGRESS - AUGUST 2007

The project has got off to a solid start during the first month. The site has been enclosed with temporary fencing and permanent hoarding is currently being erected.



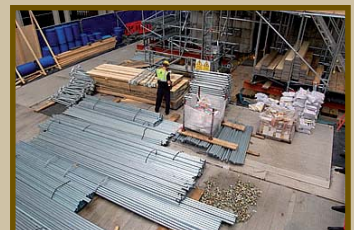
Site accommodation, temporary protection and power supplies adequate to carry out the construction works are now all in place.

Scaffolding the structure is now underway and as the weeks go by a mass of tube and boards will creep up the monument and encase the column.

This element of the works is planned to be completed by the end of October and then the restoration works can begin.

Internally, the existing services, fixtures and fittings are being removed and sample cleaning and repairs are ongoing.

We hope that all that work and live around the Monument have not been too inconvenienced during the initial stages of the works. There have been many disappointed tourists, but we are sure that these essential works will enhance the visitor experience in the future.



Scaffolding is laid out on the ground before being erected. There are 10 levels at present, but this will eventually reach an incredible 29, with a lift running up and down the outside.



Scaffolding has also been erected inside the Monument through the centre of the staircase.



For more information about the project, please visit

www.themonument.info



Designed and produced by CWO Ltd (Principal Contractor) www.cwo.uk.com